

MULTI- LAYERED

MORE COMPLETE BARRIER PROTECTION

VIA Matrix™, a complete dehydrated placental allograft, contains all native tissue layers (amnion with spongy layer and chorion), providing a protective barrier to support an optimal environment for healing.¹⁻⁵

As a multi-layered placental allograft, VIA Matrix retains the ECM scaffold, collagen, hyaluronic acid, growth factors, and cytokines.³⁻⁵ It is ideal for large wounds and is shelf-stable and convenient to use.¹



ORGANOGENESIS

VIA Matrix™

Multi-layered, Dehydrated Placental Allograft

THE MULTI-LAYERED DIFFERENCE

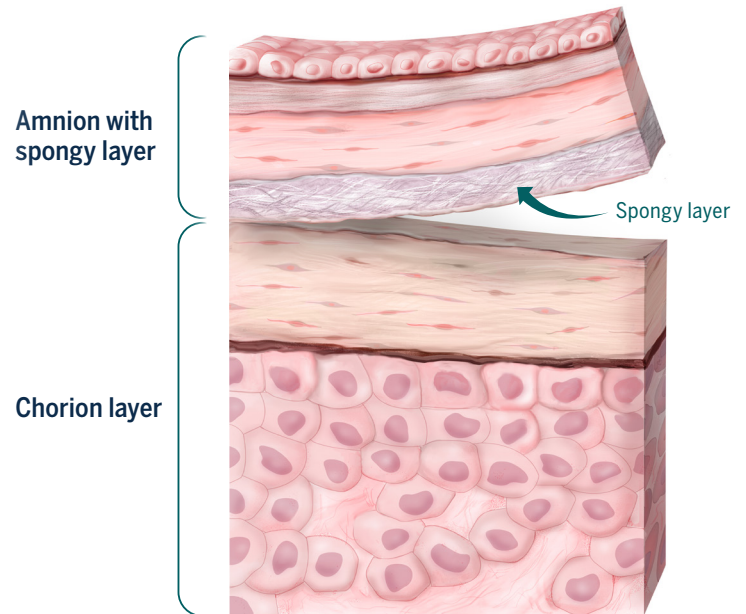
VIA Matrix™ contains all native tissue layers that are never delaminated³⁻⁵

VIA Matrix Layers

AMNION LAYER	NATIVE TISSUE	VIA MATRIX
Epithelium	✓	✓
Basement membrane	✓	✓
Compact layer	✓	✓
Fibroblast layer	✓	✓
Spongy layer	✓	✓

CHORION LAYER	NATIVE TISSUE	VIA MATRIX
Reticular layer	✓	✓
Basement membrane	✓	✓
Trophoblast layer	✓	✓

Native Placental Tissue Layers

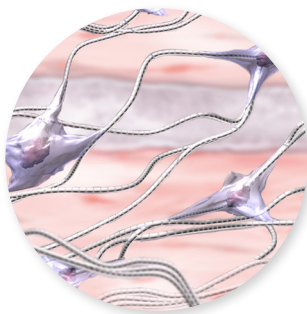


By retaining all native layers, VIA Matrix is up to 3X thicker than the single amnion layer^{3,6}

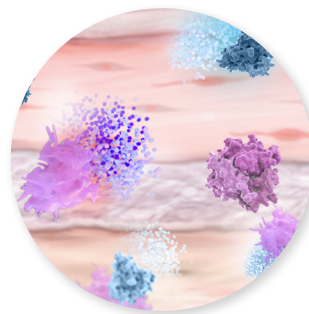
VIA MATRIX SUPPORTS HEALING

- Consists of an extracellular matrix (ECM) allowing attachment of human dermal fibroblasts *in vitro*⁵
- Provides a protective barrier to support the body's ability to repair underlying damaged tissue, such as acute and chronic wounds^{1,2}

ECM Proteins (Hyaluronic Acid & Collagen)



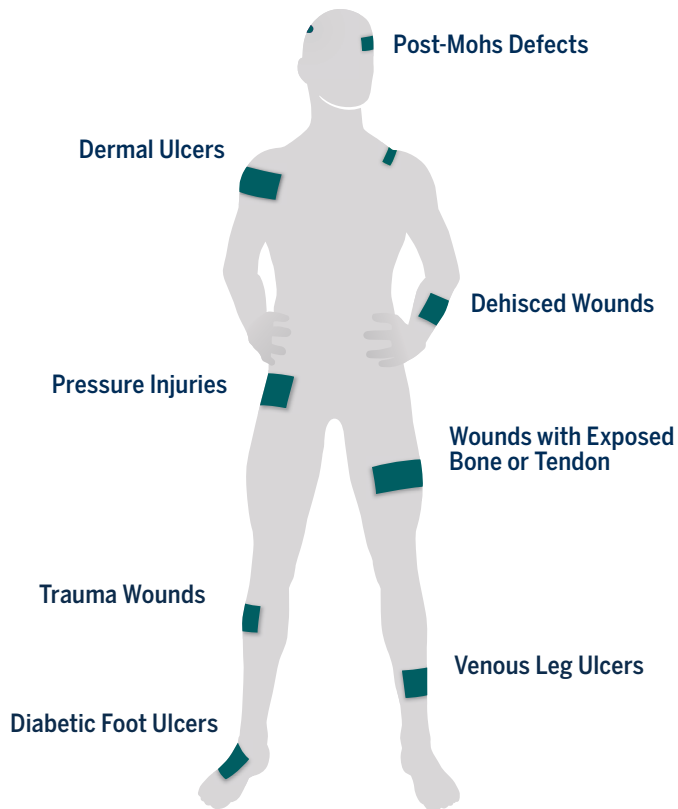
Growth Factors & Cytokines



TESTING HAS CONFIRMED THAT VIA MATRIX RETAINS
NATIVE COMPONENTS OF PLACENTAL TISSUE³⁻⁵

EASE OF USE FOR A WIDE RANGE OF WOUNDS

VIA Matrix™ may be used to support healing in a wide range of partial- and full-thickness acute and chronic wounds¹



Convenience with multiple sizes



Ready-to-use, **ambient temperature storage** (2°C to 30°C)



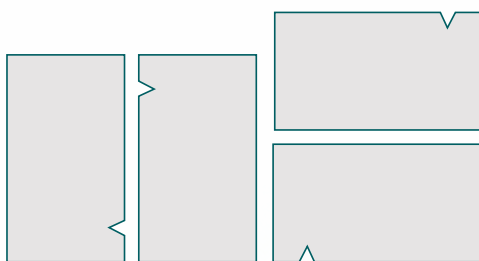
No prep required, hydrates *in situ*



E-Beam sterilized for sterility assurance level (SAL) of 10^{-6}



5-year shelf life



Epithelial layer side up

VIA MATRIX Placental Allograft

ITEM NUMBER	SIZE	SQ. CM.
585-005	2×3cm	6
585-006	4×4cm	16
585-007	4×6cm	24
585-008	10×11cm	110

Product HCPCS Code: Q4309, VIA Matrix per sq cm

THE MULTI-LAYERED DIFFERENCE TO SUPPORT HEALING



- Retains all native tissue layers that are never delaminated: amnion with spongy layer and chorion^{1,3-5}
- Provides a more complete protective barrier to support your patient's inherent ability to heal¹⁻⁵
- Retains native components of placental tissue, including the ECM scaffold, hyaluronic acid, collagen, growth factors, and cytokines³⁻⁵
- Supports an optimal environment for healing a wide range of head-to-toe wounds, including large wounds¹⁻³
- Shelf-stable and convenient to use¹

THE ORGANOGENESIS DIFFERENCE TO SUPPORT YOUR PRACTICE



A comprehensive program that provides your practice with the highest level of customer service and reimbursement support including:

- Benefit verifications
- Coding details
- Ordering and shipping support



Please visit the
VIA Matrix
web page

**Give your patients the
multi-layered difference
with VIA Matrix™**

1. VIA Matrix Tissue Information and Instructions for Use, Vivex Biologics, Inc. 2. Brantley JN, Verla TD. *Adv Wound Care*. 2015;4(9):545-559.
3. Data on File. VMX_DR-0001. Vivex Biologics, Inc. 4. Niknejad H, et al. *Eur Cells Mater*. 2008;15:88-99. 5. Data on File. VMX_DR-0002. Vivex Biologics, Inc.
6. Helmig R, et al. *Eur J Obstet Gynecol Reprod Biol*. 1993;48(3):183-189.